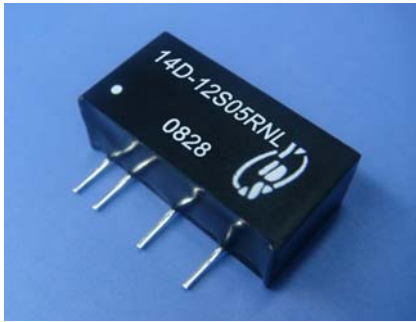




3000Vdc Single Output 1 Watt Dc-Dc Converter



FEATURES:

- 7PIN SIP Package
- High Efficiency up to 80%
- Regulated Output Types
- Internal SMD Construction
- No External Component Required
- Industry Standard Pinout
- Operating Temperature:-40°C TO +85°C



Specifications typical at TA=25°C, nominal input voltage and rated output current unless otherwise specified

Part Number	Output Voltage	Output Current	Efficiency
	Vdc	mA	%TYP
14D-XXS05RNL	5	200	65
14D-XXS09RNL	9	112	70
14D-XXS12RNL	12	84	70
14D-XXS15RNL	15	67	70
14D-XXS24RNL	24	42	70

Note:1."XX" Is Input Voltage:05=5Vdc, 09=9Vdc 12=12Vdc,15=15Vdc,24=24Vdc.

2.The input voltage increases, there will be an increase in efficiency.

Input Specifications

Parameters	Conditions	Min	Typ	Max	Units
Voltage Tolerance	Vo, Io Nom			±10	%
Filter	Capacitor				

Output Specifications

Parameters	Conditions	Min	Typ	Max	Units
Voltage Tolerance	100% full load			±5	%
Short Circuit Protection	Continuous				
Line Regulation	Regulated			±0.5	%
Load Regulation	Regulated			±1.5	%
Ripple & Noise	Output:5V,9V TYPES BW=DC To 20MHz			100	mVp-p
Ripple & Noise	Output:12-24V TYPES BW=DC To 20MHz			1% of Vout	mVp-p
Transient response setting time	50% load step change		350		us

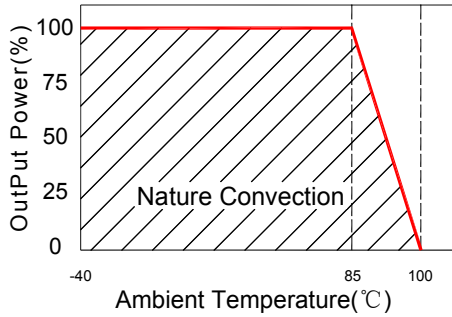
General Specifications

Parameters	Conditions	Min	Typ	Max	Units
Isolation Resistance	500Vdc	1000			MΩ
Switching Frequency	Full load,nominal input		100		KHz
Operation Temperature		-40		+85	°C
Humidity	Non Condensing			95	%
Cooling	Free air Convection				
Case material	DAP				
MTBF	MIL-HDBK-217F@25°C	3500000			Hours
Weight			2.7		g
Dimensions			19.5x7.1x10.0		mm

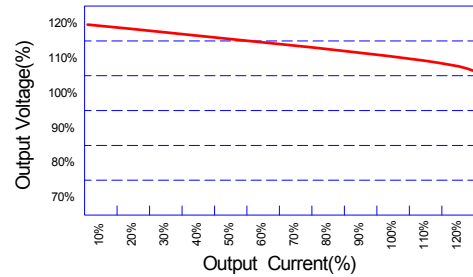


3000Vdc Single Output 1 Watt Dc-Dc Converter

Temperature Derating Graph

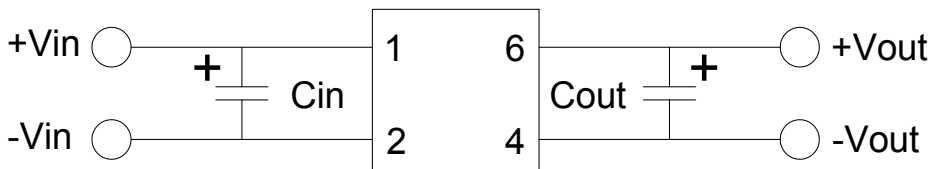


Tolerance Envelope Graph



Recommended Test Circuit

Cin: 10uF,100V
Cout:100uF,25V

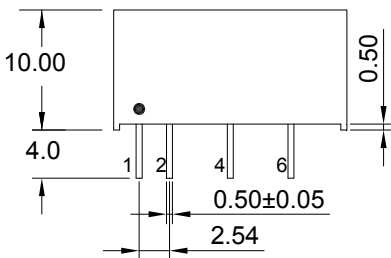
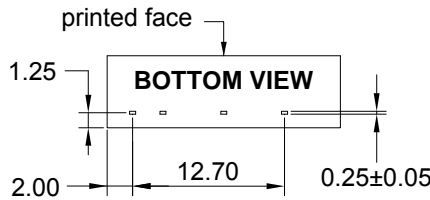
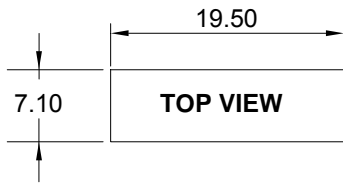


Part Number

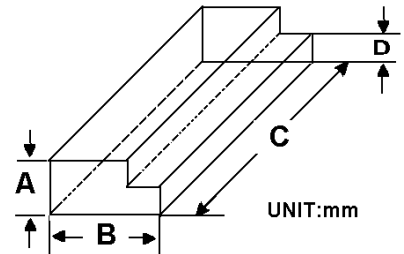
14D - 05 S 05 R NL
A B C D E F

- A:Series
- B:Input Voltage
- C:Single(S)Dual(D)
- D:Output Voltage
- E:Regulated(R)
- F:RoHS Version

Markings and dimensions



Packaging



UNIT:mm Unless otherwise specified,all tolerances are ±0.25

PIN Connection				
PIN	1	2	4	6
Single	+Vin	-Vin	-Vout	+Vout

Size(mm)			
A	B	C	D
9.5	16.5	522	5.0